

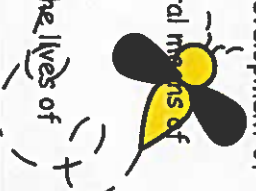
What is nurture group.



Our Nurture Group is a small classroom setting of four -eight pupils. The children are carefully brought together to ensure a balanced and functional group. The Nurture Group continues the ethos of an already nurturing environment within Green Wrythe Primary School and provides inclusion for all children promoting Personal, Social & Health Education. Children are supported within nurture to improve their emotional well-being, self-esteem and have a sense of belonging to the school community. We provide a structured routine with clear boundaries, so the children feel safe and secure. Our Nurture Group is a place of learning.

We follow the six principles of the Nurture Network.

1. Children's learning is understood developmentally (stage not age).
2. The classroom/school offers a safe base
3. Nurture is important for the development of self-esteem
4. Language is understood as a vital means of communication
5. All behaviour is communication
6. Transitions are significant in the lives of children



Nurture can help with



- Self-esteem
- Social skills/turn taking/sharing
- Emotions
- Friendship issues
- Relationships
- Anger management
- Behaviour
- Anxiety
- Bullying
- Conflict
- Relaxation techniques
- Loss and bereavement

www.nurtureuk.org



Nurture



Nurture Group

Mrs Winter and Mrs Stammers



Zones of Regulation

Goals of The ZONES Curriculum

TEACHES STUDENTS:

- Identify their feelings and levels of alertness
- Understand their feelings in context
- Effective regulation tools
- When and how to use tools
- Problem solve positive solutions
- Understand how their behaviors influence others' thoughts and feelings
- And ultimately move towards Independent Regulation

ZONES of REGULATION

The ZONES of Regulation

Blue Zone	Green Zone	Yellow Zone	Red Zone

<http://www.zonesofregulation.com/>

Nurture Group Timetable

The Nurture team plan the group for each child very carefully. The group consists of several parts.

Emotional check in

This is an opportunity for each child to talk about feelings, using zones of regulation. The group discuss how their feelings can affect behaviours.

Nurture activity

The nurture activity is planned to enhance the goals, such as positive mindset, friendships, anger management, developing self-esteem and positive communication techniques. These activities are in the form of art, games, books, and online information clips.

Snack time

This is a time for each child to experience a social setting of sharing food and being part of a conversation with others which develops listening skills, positive friendships, and positive communication.

Curriculum Task

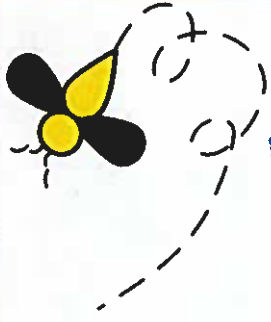
The teacher shall set the child work that is relevant for their classroom learning. This is a time for children to complete work with the support of their peers and nurture staff. Helping the child to develop a positive mindset and enforce the expectations of behaviour management in a small group to enhance their learning.

Stars

Each child awards their peers a star that reflects the positive attitudes that they have observed in the group.



Typical Issues



Lack of focus in the classroom.

Nurture group aims to support the child to recognise the triggers that disengage them in their learning. As a group and with the class teacher we support the child to recognise and implement strategies to improve.

Not wanting to attend school.

Nurture group helps to identify why these feelings are occurring. As a group we aim to build self-esteem and support the child to be reassured that school is a safe place to learn and have fun.

